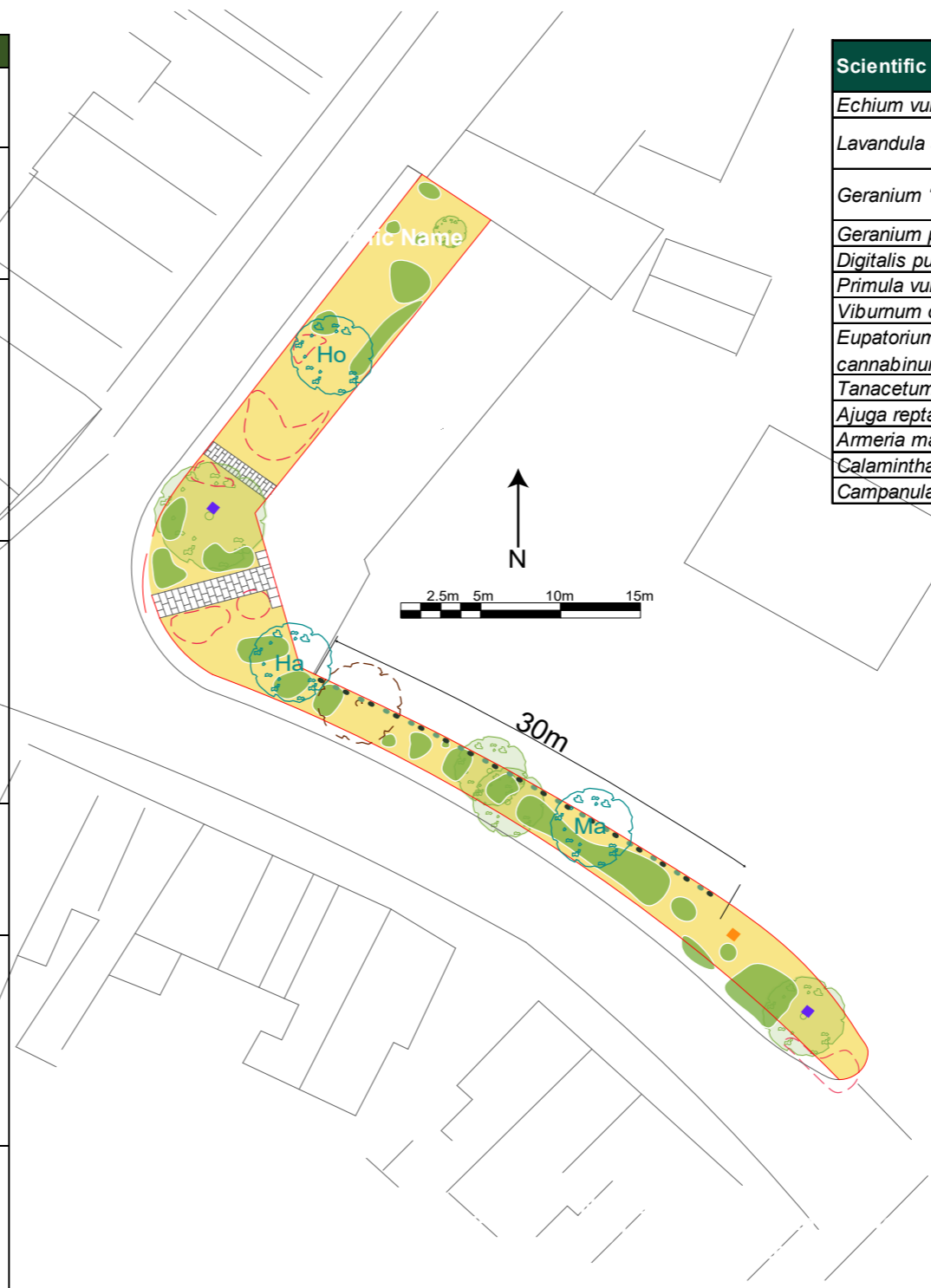


Lower Monk Street Verge Enhancements

Item	Description	Planting/Installation details	Nos.
Removal of ash tree	See plan for location. Stump can be retained.	To be undertaken outside of nesting bird season which is taken to run from March to August inclusive	
Removal of invasive/unwanted plants	Buddleia, cotoneaster and pendulous sedge to be removed.	Removal of shrubs should be undertaken outside of nesting bird season, taken to run from March to August inclusive. Plants should be removed in full including the rhizome.	
Bird Boxes	Nesting sites for various species great tit and robin.	One bird box with a 32mm hole and one open fronted bird box to be installed on retained trees marked on plan. Boxes should be mounted >2m above the ground and face northeast. Suitable types would be the Vivara Pro Seville Woodstone 32mm and Vivara Pro Barcelona Woodstone Open Nest Box or other approved by the ecologist.	No.1 32 mm Hole nest box, No.1 Open fronted nest box.
Invertebrate feature	Provides nesting sites for wild bees.	A pole- mounted wild bee hotel with holes of diameter between 2mm and 10mm, with a minimum depth of 75mm to be installed in south facing location shown at figure 1. The bee hotel should be at least 200mm wide and 400mm tall and be mounted 1m above ground. The pole should be at least 75mm in diameter and securely fixed into the ground.	No. 1
Fence climbers	Climbers to be planted on the boundary fence, as shown on plan.	Alternate planting of ivy and honeysuckle spaced approx. 1m apart at the bottom of the existing fence.	No. 15 Ivy No.15 Honeysuckle >1L pots
Flowering perennials and shrubs	A mix of attractive native and pollinator friendly planting that will provide a habitat for wildlife (see table)	Dig a hole slighter larger than the root ball and set the plant at the same depth as it was previously growing. Back fill with soil and then water. Ensure that plants are spaced apart to avoid overcrowding and away from the path. Spread a mulch of grit at the surface.	No. 3 each of the plants listed in the second table >1L pots No.39 in total
Trees	Three native trees planted around the site provide key nesting, breeding and foraging habitats for mammals, birds, invertebrates and other wildlife.	A square hole should be dug no deeper than the roots and three times the diameter of the root system. Break the sides of the holes soil up with a fork before planting. Place the tree in the planting hole so that the first flare of roots is level with the ground. Stake and attach with rubber straps. Refill the planting hole, placing soil around the roots to remove air pockets. Firm the soil but avoid compacting. Trees should be planted under the supervision of a suitably qualified and experienced person.	No.1 Field maple, No.1 Hazel Mo.1 Holly Light standards >1.8m and 8cm girth



Scientific Name	Common Name	Native to the UK?	RHS Plant for pollinators	No. 1L pots
<i>Echium vulgare</i>	Vipers bugloss	Yes	Yes	3
<i>Lavandula angustifolia</i>	Lavender		Yes	3
<i>Geranium 'Rozanne'</i>	Geranium		Yes	3
<i>Geranium pratense</i>	Meadow Cranesbill	Yes	Yes	3
<i>Digitalis purpurea</i>	Foxglove	Yes	Yes	3
<i>Primula vulgaris</i>	Primrose	Yes	Yes	3
<i>Viburnum opulus</i>	Guelder rose	Yes	Yes	3
<i>Eupatorium cannabinum</i>	Hemp agrimony	Yes	Yes	3
<i>Tanacetum vulgare</i>	Tansy	Yes	Yes	3
<i>Ajuga reptans</i>	Bugle	Yes	Yes	3
<i>Armeria maritima</i>	Thrift	Yes	Yes	3
<i>Calamintha nepeta</i>	Lesser calamint	Yes	Yes	3
<i>Campanula glomerata</i>	Clustered bellflower	Yes	Yes	3

- Remove ash tree
- Remove Cotoneaster, Buddleia and Pendulous Sedge
- Flowering perennial planting
- Existing shrubs
- Climbers
- New tree planting
- Existing trees
- Invertebrate feature
- Bird box

Prepared by The GIC on behalf of Monmouthshire County Council
Contact: gary@thegic.com

Date of Issue: 091123
GIC_0001101

www.monlife.co.uk

Ar gyfer meddwl, corff ac enaid ein cymuned
 For the mind, body and soul of our community

Monmouthshire Local
Nature Partnership



Partneriaeth Natur
Lleol Sir Fynwy