

Dan y Deri Islands

Island 1

Native Hedges

Two native hedges to be planted by excavating trench planting with staggered double row of 4 whips (<1m in height) per linear metre. Whips to be secured with canes and protected with biodegradable guards. Planting to be mulched with tree bark. Hedge to have annual trim once established.

West Hedge

| Common Name | Scientific Name | Native to the UK? | Size | No. of Plants |
|--------------|-------------------------|-------------------|------|---------------|
| Dogwood | <i>Cornus sanguinea</i> | Yes | >1m | 9 |
| Holly | <i>Ilex aquifolium</i> | Yes | >1m | 9 |
| Hazel | <i>Corylus avellana</i> | Yes | >1m | 9 |
| Guelder rose | <i>Viburnum opulus</i> | Yes | >1m | 9 |

South Hedge

| Common Name | Scientific Name | Native to the UK? | Size | No. of Plants |
|--------------|-------------------------|-------------------|------|---------------|
| Dogwood | <i>Cornus sanguinea</i> | Yes | >1m | 14 |
| Holly | <i>Ilex aquifolium</i> | Yes | >1m | 14 |
| Hazel | <i>Corylus avellana</i> | Yes | >1m | 14 |
| Guelder rose | <i>Viburnum opulus</i> | Yes | >1m | 14 |

Wildflower Plug Planting

Volunteers to plant wildflower plugs in grassland in north-eastern section (marked on plan) as follows:
Grass mowing to be relaxed to single annual cut with cuttings removed, Total of No 40 wildflower plugs to be planted in random locations across verges in autumn/spring. To be supplied by Celtic Wildflowers (or approved alternative). <https://celticwildflowers.co.uk/>

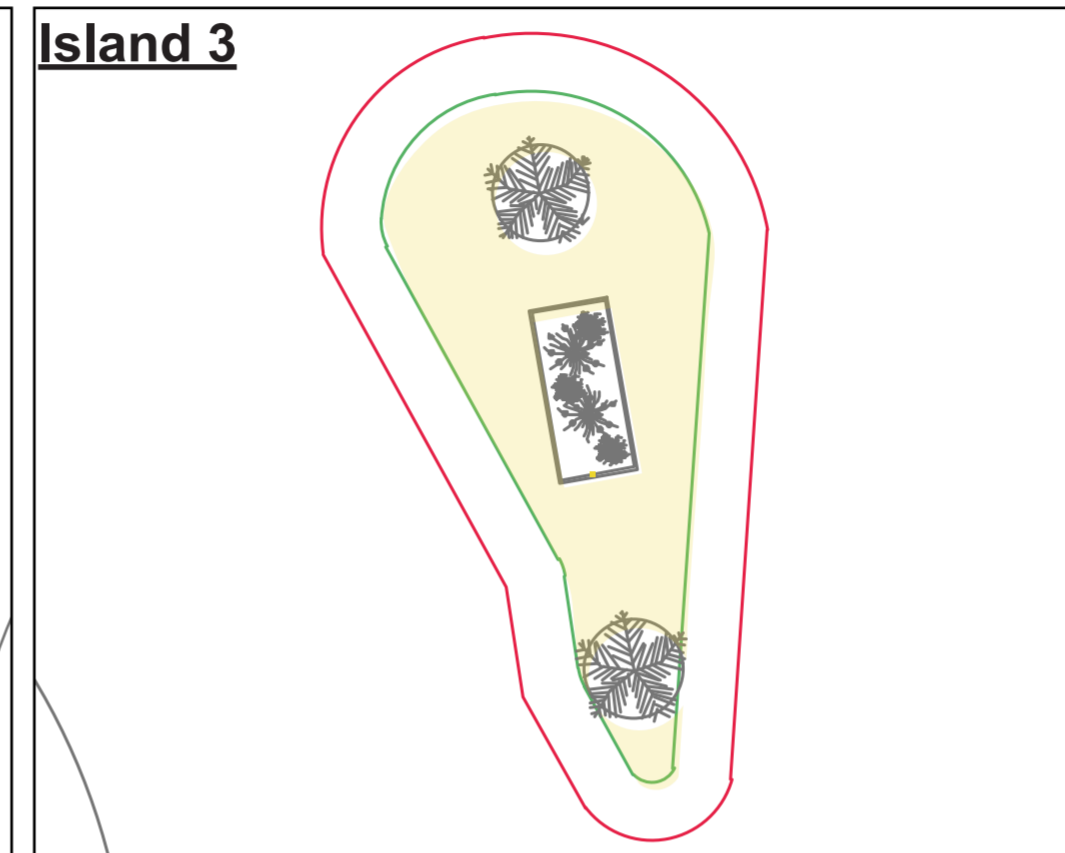
| Common Name | Scientific Name | Native to the UK? | No. of Plants |
|--------------------|-----------------------------|-------------------|---------------|
| Ox eye daisy | <i>Leucanthemum vulgare</i> | Yes | 10 |
| Birds Foot Trefoil | <i>Lotus corniculatus</i> | Yes | 10 |
| Common knapweed | <i>Centaurea nigra</i> | Yes | 10 |
| Field scabious | <i>Knautia arvensis</i> | Yes | 10 |

Island 2

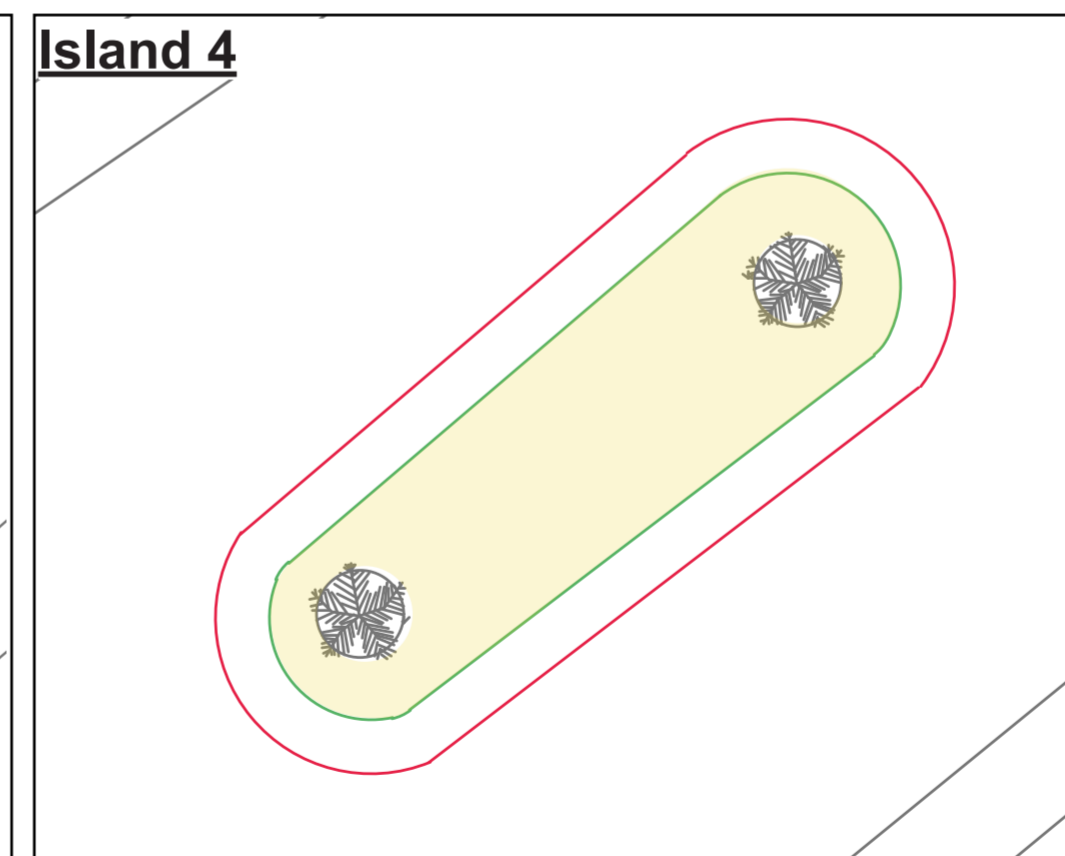
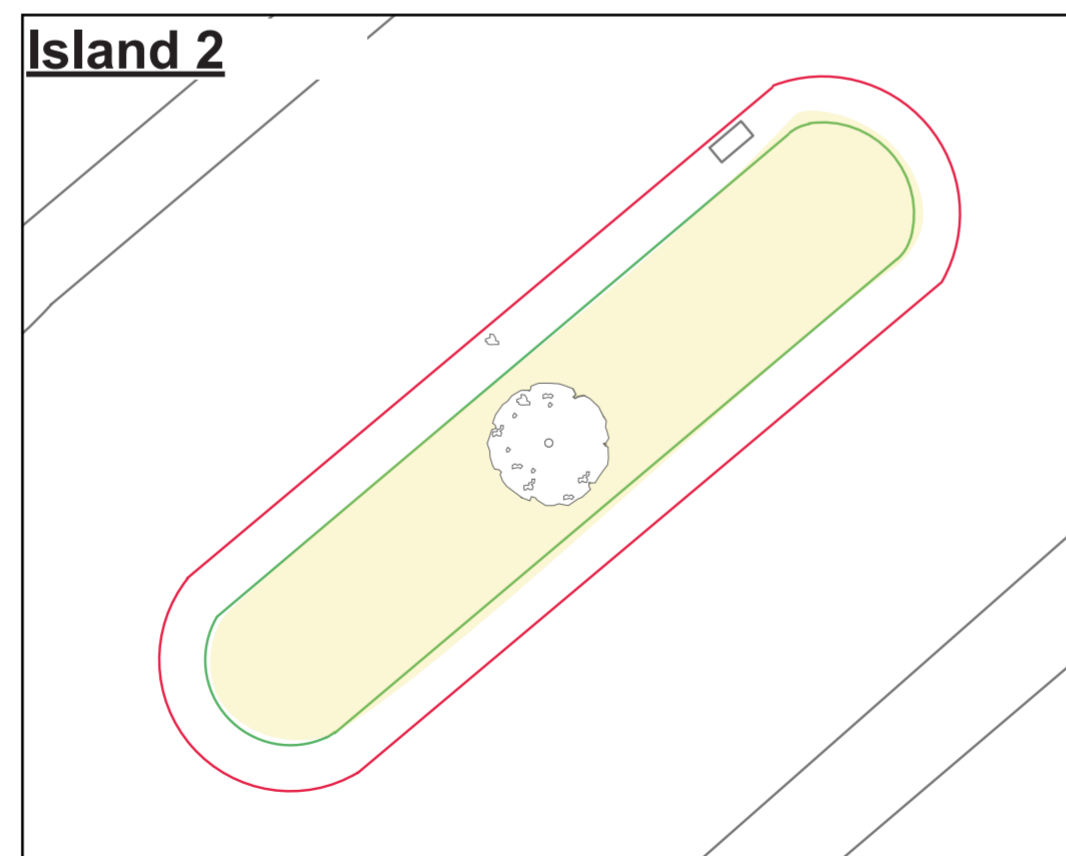
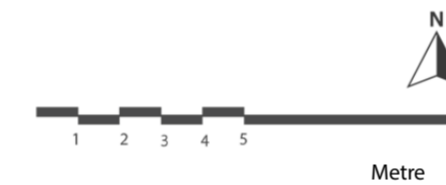
Wildflower Meadow

Grass mowing to be relaxed to single annual cut with cutting removed, apart from 500mm wide margins to be cut regularly to maintain tidy appearance. Signs to be made (by local school?) explaining project. Total of No 100 wildflower plugs to be planted in random locations in autumn/spring. To be supplied by Celtic Wildflowers (or approved alternative). <https://celticwildflowers.co.uk/>

| Common Name | Scientific Name | Native to the UK? | No. of Plants |
|--------------------|-----------------------------|-------------------|---------------|
| Ox eye daisy | <i>Leucanthemum vulgare</i> | Yes | 25 |
| Birds Foot Trefoil | <i>Lotus corniculatus</i> | Yes | 25 |
| Common knapweed | <i>Centaurea nigra</i> | Yes | 25 |
| Field scabious | <i>Knautia arvensis</i> | Yes | 25 |



Key
█ Proposed Native Hedge
█ Wildflower Meadow
█ Existing Bench



Island 3

Wildflower Meadow

Grass mowing to be relaxed to single annual cut with cutting removed, apart from 500mm wide margins to be cut regularly to maintain tidy appearance. Signs to be made (by local school?) explaining project. Total of No 100 wildflower plugs to be planted in random locations in autumn/spring. To be supplied by Celtic Wildflowers (or approved alternative). <https://celticwildflowers.co.uk/>

| Common Name | Scientific Name | Native to the UK? | No. of Plants |
|--------------------|-----------------------------|-------------------|---------------|
| Ox eye daisy | <i>Leucanthemum vulgare</i> | Yes | 25 |
| Birds Foot Trefoil | <i>Lotus corniculatus</i> | Yes | 25 |
| Common knapweed | <i>Centaurea nigra</i> | Yes | 25 |
| Field scabious | <i>Knautia arvensis</i> | Yes | 25 |

Island 4

Wildflower Meadow

Grass mowing to be relaxed to single annual cut with cutting removed, apart from 500mm wide margins to be cut regularly to maintain tidy appearance. Signs to be made (by local school?) explaining project. Total of No 100 wildflower plugs to be planted in random locations in autumn/spring. To be supplied by Celtic Wildflowers (or approved alternative). <https://celticwildflowers.co.uk/>

| Common Name | Scientific Name | Native to the UK? | No. of Plants |
|--------------------|-----------------------------|-------------------|---------------|
| Ox eye daisy | <i>Leucanthemum vulgare</i> | Yes | 25 |
| Birds Foot Trefoil | <i>Lotus corniculatus</i> | Yes | 25 |
| Common knapweed | <i>Centaurea nigra</i> | Yes | 25 |
| Field scabious | <i>Knautia arvensis</i> | Yes | 25 |

