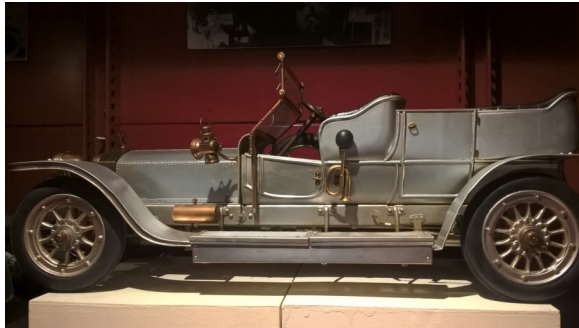


At night, when the museum is closed, Mabon has great fun driving around the museum in this car.



Can you find Mabon's car?

You'll have to look up high to find it!

There are lots of pictures and models of other types of transport in the museum.



Have a look around and see how many different ones you can find.

Which one would you choose to travel home in?



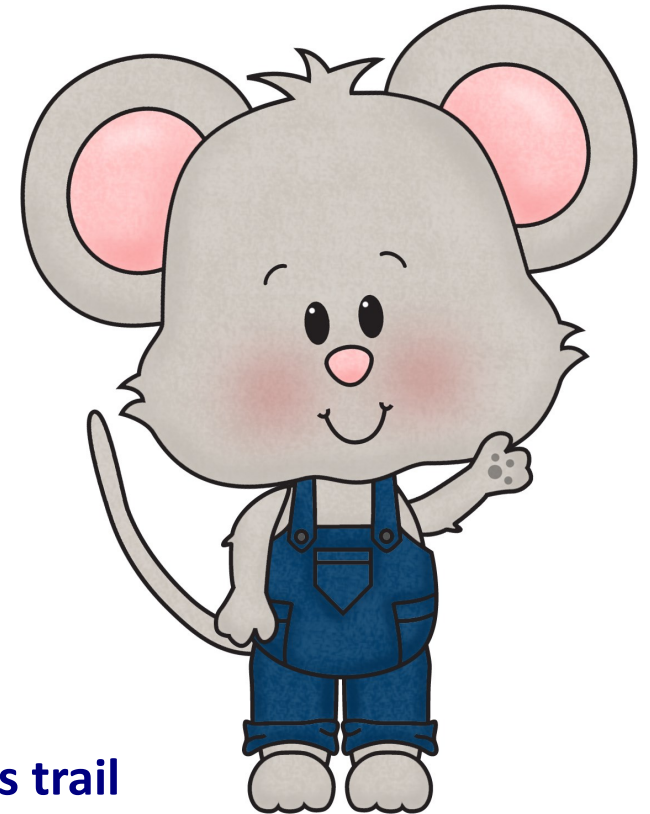
Let's explore...

Monmouth Museum

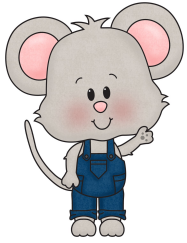
with

Mabon

the Museum Mouse



A mini-explorers trail

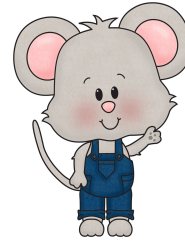


Mabon is learning to spell his name

Can you spell your name?

Write the letters of your first name in the boxes below and find things in the museum beginning with the letters of your name.

You might need to add more boxes if you have a long first name!



Mabon is also learning to count.

Explore the museum and find this piece of furniture.



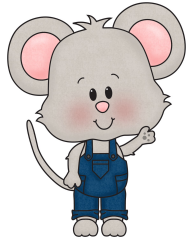
How many ships can you see?

Where do you think these ships have been?

Where would you like to go to on a ship?

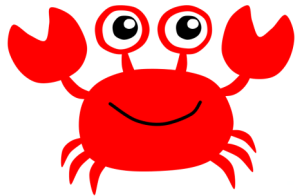
What would you take with you on your adventure?





Hide and Seek is one of Mabon's favourite games to play with his friends.

His friends are very good at hiding in the museum. They hide in pictures, on furniture and in lots of other things.
Can you help Mabon find his friends?



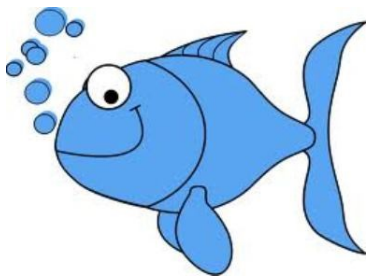
Crab



Lion



Horse



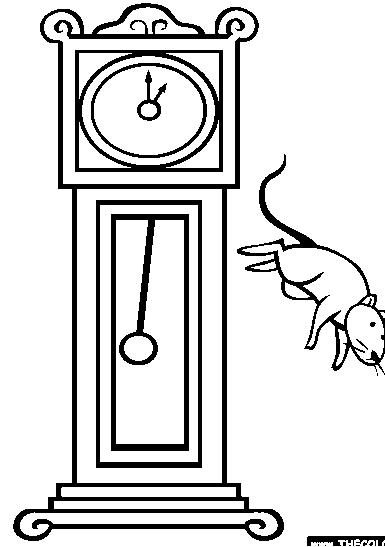
Fish

Can you...

- Roar like a lion?
- Move like a fish?
- Scuttle like a crab?
- Neigh like a horse?



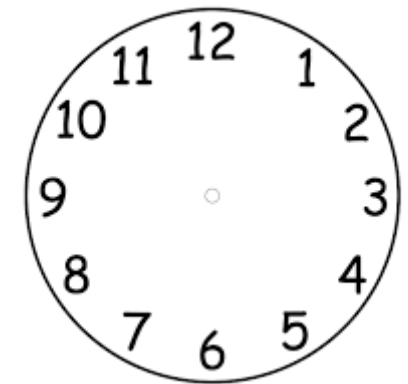
Tick Tock, Tick Tock. Let's go find the museum clock.

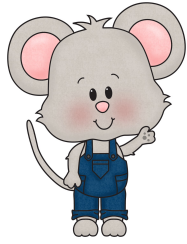


Can you think of a nursery rhyme that tells the story of a clock and a mouse?

Mabon the museum mouse loves his food. Look at the hands of the clock. What time does Mabon have his tea?

What time do you have your tea? Draw the time on this clock face.





Mabon loves to play a game of I-Spy.
Can you help him find something...

Shiny

Wooden

Hard

Old

Metal

Dusty

Smooth

Ginormous

Funny

Round

Glass

Beautiful

Square

Smelly

Pottery



Mabon's Favourite

This is a model of a very famous ship called HMS Victory. It is Mabon's favourite object in the whole museum!



Find your favourite thing in the museum and draw it in this box

A large dashed rectangular box intended for drawing a favorite object from the museum.