



The GGGP

The Gwent Green Grid Partnership (GGGP) is a three-year project running from March 2020 to March 2023. The partnership includes the five Local Authorities of Gwent (Monmouthshire, Blaenau Gwent, Caerphilly, Newport and Torfaen), as well as Natural Resources Wales, Forest Research and Severn Wye Energy Agency. The partnership will bring to life the Gwent Public Service Board's commitment to implementing the Well-being of Future Generations (Wales) Act and the Environment (Wales) Act through improved collaboration with partners, involving local citizens and delivering across all seven well-being goals. It will also help act as a delivery mechanism for the South East Wales Area Statement working with Natural Resources Wales. The GGGP aims to improve green infrastructure in the Gwent area, providing real benefits to local communities. Green infrastructure has a crucial role to play in addressing nature, climate and health emergencies.

With the project now in its third and final year, the project team have an extremely busy schedule delivering across all workstreams. Landscape and green infrastructure improvement works and new areas of tree planting can already be seen across the Gwent region and local communities are engaged in initiatives to promote a pollinator friendly approach to grassland management. This second Newsletter outlines the progress being made in all workstreams, introduces the project team and promotes upcoming events.





WORKSTREAM 1: Regional GI Strategy and Partnership

The GGGP demonstrates a ground-breaking way of working collaboratively to deliver strategic and local outcomes to provide a regional approach to Green Infrastructure in Gwent. Through this collaborative working, the first workstream focuses on establishing a Regional GI strategy and sitting alongside it, a Regional Health Impact Assessment (HIA) and Mental Well-being Impact Assessment. As part of the governance structure of the GGGP, a Partnership Board is in place to track progress, identify opportunities for added value and through collaboration, look at a long-term approach and legacy of the project.

The Regional Health and Wellbeing Coordinator will be promoting projects to stimulate healthy lifestyle initiatives for the wellbeing of residents across Gwent. These projects will include healthy prescribing, community growing enterprises and environmental groups.



WORKSTREAM 2: Gwent Green Corridors

A Gwent Regional Access group is being established from the authorities Local Access forums and local representatives, this will help support the GGGP team in identifying and delivering works in areas where they are needed, drawing on local knowledge and skillsets. It will also be a key component in sharing good practice across the region, and looking to the legacy of the project. Its advice will also feed into the development of the Green corridor strategic access plan, a key piece of work that will form a sustainable template for the regions to work towards in the delivery of works on the ground and supporting best practice across the region during and beyond the end of the GGG project.

Access improvement projects are underway to deliver practical ground improvements locally and at a regional scale by identifying missing links in the access network. This collaborative way of delivery demonstrates one of the strengths of the GGGP, enabling people across the Gwent region to lead active healthy lifestyles, provide economic opportunities and expand, where possible, the network available to cyclists and horse riders.

The partnership is supporting four trainee countryside rangers to deliver access improvements. The trainees will be trained in all the required skills to qualify as rangers and will also assist in project delivery and at community engagement events.



WORKSTREAM 3: Gwent i-Tree Eco Study Pilot Areas

The GGGP has employed the i-Tree Eco approach to two case study areas in Gwent: the first in Newport and the second in and around Chepstow and Severnside in Monmouthshire. i-Tree Eco is a software application which is used to quantify the structure and environmental effects of urban trees and calculate their value to society with respect to: the resilience of current and planned urban tree stocks to climate change, their role in regulating temperatures, and water management. Data from an i-Tree Eco survey can be used to help those who look after these trees to make more informed management decisions.

In the data collection stage of the project, a group of volunteers were trained to undertake the data collection phase of the project, representing a fantastic contribution to the project as a whole as well as providing them with a first-hand opportunity to learn more about trees. Forest research are now progressing swiftly with a technical report for the GGG Delivery Team, including a summary for non-specialist readers, and this will be ready in early summer 2022. A "Guide to running your own i-Tree Eco project" which draws together the essentials to help a project group make decisions in getting an Eco project up and running has also been prepared.



WORKSTREAM 4: Gwent GI Projects

Informed by the strategic outcomes of the partnership, the Green Infrastructure projects will deliver a range of practical landscape enhancements, development and implementation of GI management plans, implementation of Nature Isn't Neat outcomes, delivery of the pollinator friendly management approach, tree planting and access improvements. Communities have been engaged in delivery of projects across Gwent in green spaces, urban and country parks, along cycleways, PROWs and in woodlands.

Some examples of projects already completed include tree planting in Bailey Park, Abergavenny and at Chepstow School, landscape enhancements in urban parks across Torfaen, access improvements on the Ebbw Fach trail at Westside, access and GI enhancements in Sirhowy Country Park working with Sirhowy Woodland Community Group and county-wide tree planting across Newport for the Queen's Platinum Jubilee.

Over the next ten months many more projects, locally and regionally, will be supported by the project.



WORKSTREAM 5: Pollinator Friendly Gwent

The work within this workstream is split into two elements: Nature Isn't Neat and Resilient Grasslands (Cut and Collect).

You may have noticed a change in the way your local authority manages grassland in your community. Green spaces are being managed the 'Nature isn't Neat' way, letting grassland in parks and along verges grow in the spring and summer to create meadow areas and provide better habitats for pollinators, such as bees and butterflies as well as a variety of other wildlife.

The Nature isn't Neat team are engaging with local communities to gather opinions on this approach to grassland management, to ensure that we are finding the right balance between nature and recreation, [please click here to let us know what you think](#).

Community engagement events are taking place across the region this Spring and Summer, these include a series of free half-day insect identification and recording workshops, art workshops developing a pollinator friendly artwork with a local artist, as well as engaging with schools in the region about Nature isn't Neat principles and the importance of pollinators. For more information about the events and activities taking place in your community, please visit www.monlife.co.uk/outdoor/nature-isnt-neat or follow [@natureisntneat](https://twitter.com/natureisntneat)

Cut and Collect: Severn Wye Energy Agency are conducting a detailed study of each local authority area, mapping existing green infrastructure, waste streams and land management needs. Following a cut and collect trial, a detailed study of cut and collect options for Gwent will be developed, providing volumes of potential grassland that will be available along with life cycle analysis, financial analysis, and a strategic project plan to determine the mechanisms needed for the effective management of grasslands while addressing barriers and identifying different treatments to utilise grass cuttings.

Events Calendar

The following Gwent-wide events where the Gwent Green Grid Partnership and Nature isn't Neat will be this Spring/Summer:

Go Wild

Parc Bryn Bach
28th May

Jubilee Garden Party

Raglan Castle
4th and 5th June

Our Future Festival

Bridgend College, Pencoed Campus
10th and 11th June

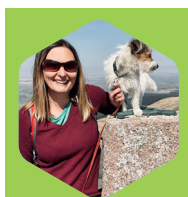
Cwmbran Big Event

The Boating Lake
11th June

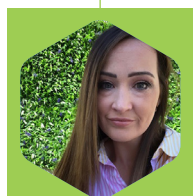
Bee Festival

Monmouth
2nd and 3rd July

THE GGGP TEAM!



**Collaboration
Lead**
Helen Fairbank



**Business Support
Assistant**
Jade James



**Nature Isn't Neat
Implementation
Officer**
Elliot Waters



**Nature Isn't Neat
Project Officer**
Stacey Delbridge



**Trainee Ranger
Coordinator**
James Bower



**Regional Access
Officer**
Richard Garner



**Health & Wellbeing
Coordinator**
Dez Jones



**Sustainable
Communities
Officer**
Colette Mooney



**Trainee
Ranger**
Anthony Lock



**Trainee
Ranger**
Jamie Jones



**Trainee
Ranger**
Kristen Throbroe



**Trainee
Ranger**
Rhys Nunnerley



What's next for the GGG Partnership?

As we move into the warmer summer months, the implementation of green infrastructure and landscape improvement projects and Pollinator Friendly Gwent initiatives will be evident in green spaces across the region.

The GGGP team will be buzzing with activities and events in 2022, so follow us on [Twitter @Gwentgreengrid](#) for all the latest news and please re-tweet and share widely.

For more updates please see the GGGP webpages:

www.monlife.co.uk/outdoor/green-infrastructure/green-infrastructure-partnerships-projects/